

For more information contact  
[www.centrasecurity.co.uk](http://www.centrasecurity.co.uk)

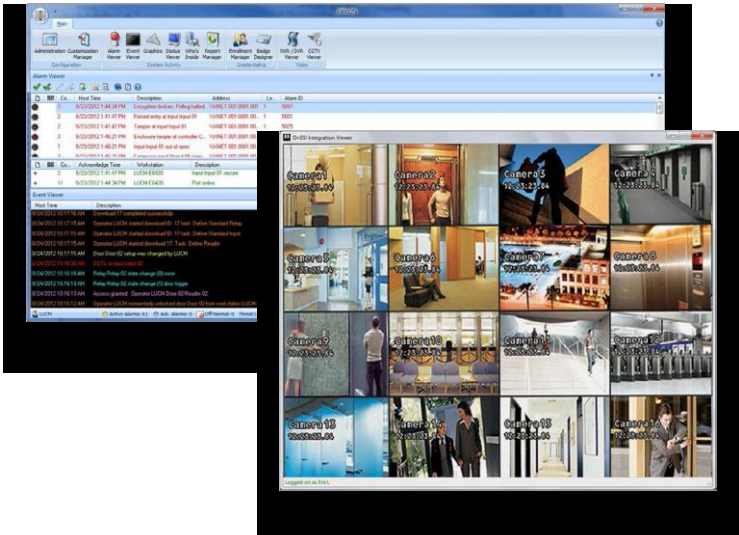
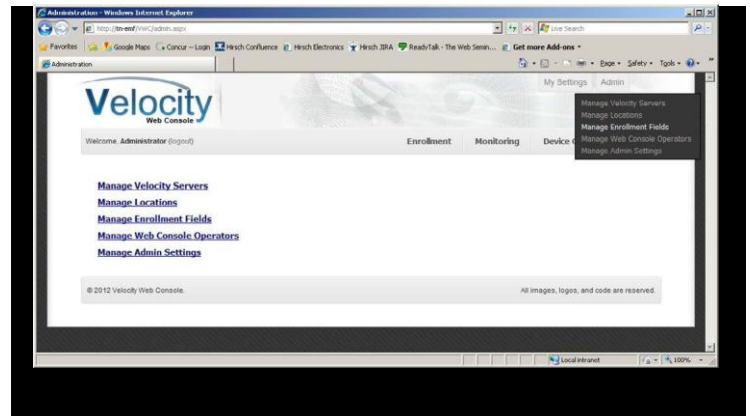


## HIRSCH™ Velocity™ 3.5

Velocity is an integrated software platform that manages access control and security operations in hundreds of different facilities, from single high secure rooms to multi-building multi-location campuses. Control doors, gates, turnstiles, elevators and other building equipment, monitor users as they move around a facility, prevent unwanted access, maintain compliance and provide a robust audit trail.

Hirsch Velocity 3.5 is a next generation software platform from Identive that is designed to deliver unsurpassed security, interoperability, backwards compatibility and the ability to expand to accommodate the evolution of security technology and business/facilities needs.

New usability features in Velocity 3.5 include the Velocity Web Console that allows administrators and operators to access real-time system information, enrollment, and control functionality through a compatible browser on almost any device. This provides mobility options for security/facilities personnel allowing administrators/security personnel to access key features of Velocity via fixed computers and mobile devices.



Velocity 3.5 builds on the Hirsch product legacy while maintaining the fully featured management environment that has received many accolades for its robust architecture, full feature set and ease of use. The modular User Interface is retained, so that users with Velocity experience will easily transition to the latest build. For new users the intuitive interface is supported by a comprehensive set of tutorials and help files. Performance enhancements throughout the product enable faster access to administrative views, including animated floor plans and alarm monitoring.

# Velocity™ 3.5

## Security Management System

### UI Core Features:

Feature	Description
<b>Administration</b>	Contains Velocity, DIGI*TRAC (Controllers) and Interfaces Configuration Tools
<b>Alarm Viewer</b>	Monitor and acknowledge active system alarms, such as a DOTL (door open too long)
<b>Graphics</b>	Provide a visual interface for door status, alarms and links to video feeds
<b>Event Viewer</b>	View system events as they occur with as much granularity as desired
<b>Enrollment Manager</b>	A comprehensive enrollment tool for managing individuals, groups and their credentials
<b>Badging Design</b>	Design and control the issuance of credentials from within the Velocity environment
<b>Report Manager</b>	Choose from 75 default reports or create your own, export in wide variety of formats
<b>Velocity Web Console</b>	Access information and control systems via a web link, optimized for IE9 & FF14
<b>Who's Inside</b>	Monitor the personnel in a given building or floor, ideal for managing emergency egress/mustering
<b>Status Viewer</b>	Review the status of all the hardware connected to a system, doors, inputs, relays, controllers and more
<b>Scheduling Agent</b>	Schedule a wide range of system tasks like deactivating credentials, running logs, printing reports or executing command sets
<b>Trigger Action Manager</b>	Pair an action to an event, for example associate an alarm with a video camera
<b>CCTV and DVR Integrations</b>	View video with the built in video viewer, launch from active alarm, graphics module or the viewer

### Velocity 3.5 has a wide range of powerful optional add-ons that provide additional functionality including:

Add-On	Description
<b>Velocity Cert Service</b>	FIPS 201 PIV and PIV-I credentials FIPS/CAK/TWIC
<b>Point Level E-mail</b>	Trigger e-mails based on a specific system event/location
<b>Universal I/O</b>	Allows control of inputs/outputs across any scale of system
<b>Universal Anti-Passback</b>	Synchronize entry and exit passback control system wide
<b>Enterprise Management Framework</b>	Manage multiple servers over the web using the EMF toolset
<b>Active Directory/HR Provisioning</b>	RBAC tied to Identity Attributes (from HR system or AD)

### Integrations and Optional Modules

Velocity's powerful SDK allows integrations to external video systems, including to Genetec and ONSSI. Aventura is coming soon! Contact the factory for the latest information on integration options.

Enterprise Management Framework is an option that allows administrators to access multiple servers through one web-based tool; as with the Velocity Web Console, roles can be created that allow for a subset of systems, buildings or rooms to be accessed and controlled by security/facilities personnel.

The Velocity Cert Service, included in the Federal version of Velocity now registers all PIV, TWIC, CAC, PIV-I and CIV cards using a USB card reader; allowing Velocity to monitor the status of the PIV Authentication Key (PAK) and Card Authentication Key (CAK) for all enrolled credentials; deactivating physical access if either certificate is suspended or revoked. The Velocity Cert Service Includes enhanced support for FIPS-201 PIV cards and readers and improved support for real-time / near-time SCVP digital certificate checks.

Hirsch Velocity 3.5 seamlessly bridges physical access and IT infrastructures in a powerful and easy-to-use security management solution that scales from single-user applications to enterprise-class environments connecting hundreds of doors and desktops for thousands of users. Utilized by IT, security, facility management and guard personnel in commercial, governmental and educational institutions worldwide, Velocity seamlessly integrates access control, intrusion detection, video surveillance and recording, photo ID badging, smart cards, biometrics, and interoperability with other building and business systems.

**Full Control. Managed Access. Flexible and Powerful. High Secure. Hirsch Velocity from Identive.**

# Velocity™ 3.5

## Security Management System

Choose the version of Velocity that meets your application needs:

Features	Version:	Workstation	Corporate	Federal	Enterprise Level 1	Enterprise Level 2
<b>Core Functionality</b>						
Doors		32	128	128	256	Unlimited
Cardholders		Unlimited	Unlimited	Unlimited	Unlimited	Unlimited
Server/Client License Included		0 + 0	Server +10	Server +10	Server +25	5 Server +25
Web Console		Standard	Standard	Standard	Standard	Not Available
Administration		Standard	Standard	Standard	Standard	Standard
Event Viewer		Standard	Standard	Standard	Standard	Standard
Alarm Viewer		Standard	Standard	Standard	Standard	Standard
Status Viewer		Standard	Standard	Standard	Standard	Standard
Report Manager		Standard	Standard	Standard	Standard	Standard
Enrollment Manager		Standard	Standard	Standard	Standard	Standard
Badging		Standard	Standard	Standard	Standard	Standard
Alarm Graphics		Not Available	Standard	Standard	Standard	Standard
<b>Interfaces Configuration</b>						
Email Writer		Not Available	Standard	Standard	Standard	Standard
Serial Writer		Not Available	Standard	Standard	Standard	Standard
CCTV Interface		Not Available	Optional	Optional	Not Available	Not Available
Central Station Receiver Interface		Not Available	Optional	Optional	Optional	Standard
MS Message Queue		Not Available	Optional	Optional	Optional	Optional
DVR/NVR Integration (per integration)		Not Available	Optional	Optional	Optional	Optional
<b>Professional Services Upgrade Licenses</b>						
FIPS/CAC/TWIC Certificate Processing		Not Available	Optional	Standard	Optional	Optional
Point Level E-mail		Not Available	Optional	Optional	Optional	Optional
Universal I/O		Not Available	Optional	Optional	Optional	Optional
LACS Interface		Not Available	Optional	Optional	Optional	Optional
HR Integration		Not Available	Optional	Optional	Optional	Optional
Active Directory Integration		Not Available	Optional	Optional	Optional	Optional
NVR Integration ( OnSSI, Genetec)		Not Available	Optional	Optional	Optional	Optional
Integration Adapter		Not Available	Optional	Optional	Optional	Optional
Interoperability Development Kit		Not Available	Optional	Optional	Optional	Optional